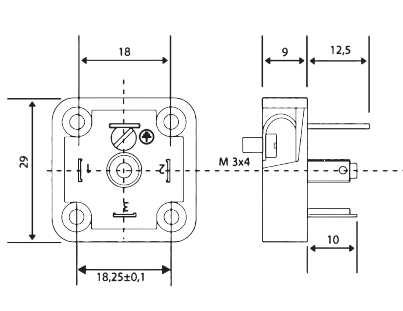


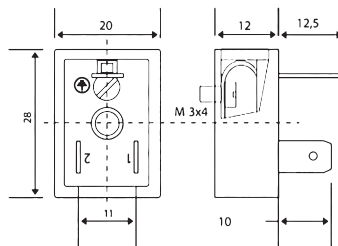
STIFT ...

Stiftplatte mit Lötanschluß, PA66 + 30% FV, max. Spannung 250V/AC, Betriebstemperatur -30°C bis +125°C

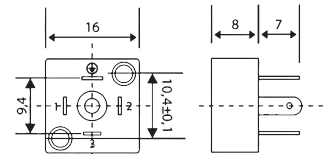
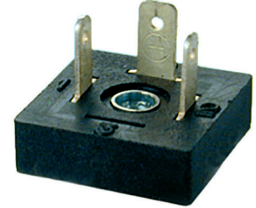
TYP	Bauform	Pohlzahl	max. Leitung	max. Strom	Betriebsstrom	Artikel-Nr.
STIFT AV02	A	2 + PE	1 mm ²	max. 16 A	10 A	200007399
STIFT AV03	A	3 + PE				200007400
STIFT BV02	B-Industrie	2 + PE	0,75 mm ²	max. 10 A	6 A	200007401
STIFT C02	C-Industrie	2 + PE				200007407
STIFT C03		3 + PE				200007408



STIFT AV

2P + 1 \perp 3P + 1 \perp 

STIFT BV

2P + 1 \perp 

STIFT C

2P + 1 \perp 3P + 1 \perp