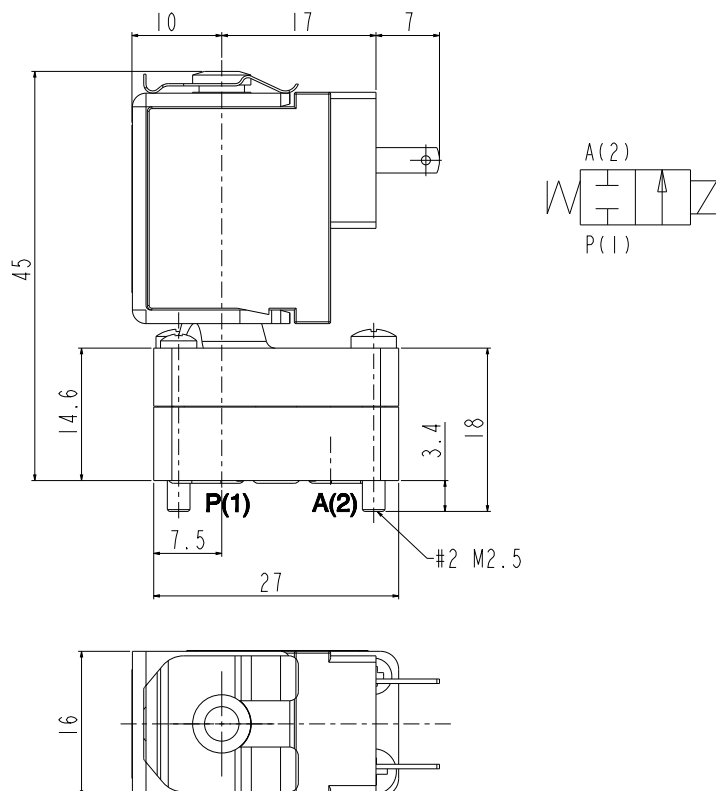


ASCO™ MICRO SOLENOID VALVE - DRY

2/2 NORMALLY CLOSED - DIRECT ACTING - TOTAL ISOLATION - SUB-BASE

SERIES
D151-D04



General Features

Total isolation micro solenoid valve: the actuator is totally isolated from the fluid so that the wetted parts are just the body and the diaphragm.

Reduced internal volume: 67µl. Possibility of disassembling for inspection.

The parts subject to sliding friction are duly coated by PTFE (polytetrafluoroethylene) based self lubricating material.

Suitable to shut off liquid and gaseous fluids (verify the compatibility of fluid with materials in contact).

Technical Features

Maximum allowable pressure (PS)	3 bar
Opening time	~20ms
Closing time	~30ms
Fluid temperature	-10°C +80°C
Max viscosity	5°E (~37 cStokes or mm²/s)

Materials in Contact with Fluid

Body	PA 12 (polyamide)
Sealing	EPDM

Coil

Continuous Duty	ED 100%
Encapsulation material	PA (polyamide) fiberglass reinforced
Yoke	External in zinc plated steel
Insulation class	F (155°C)
Ambient temperature	-10°C +60°C
Electric connections	DIN 46340
Protection degree	IP 40 (EN 60529) with female wire terminals 2,8x0,5 totally insulated
Voltages	DC 12-24V (+10% -5%) (Other voltages on request)

Port size	Orifice size (mm)	Differential pressure (bar)					Kv (m³/h)	Series and type			Power absorption			Sealings	Notes	Weight (kg)
		Δp min	Δp max													
			Gases		Liquids			Valve	Coil	AC (VA)		DC (W)				
			AC	DC	AC	DC				Inrush	Holding					
Sub-base	1,5	0	-	2	-	2	0,03	D151D04	ZE30A	-	-	4	EPDM	1	0,040	

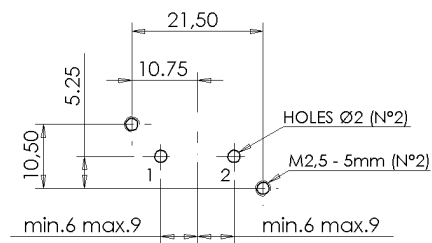
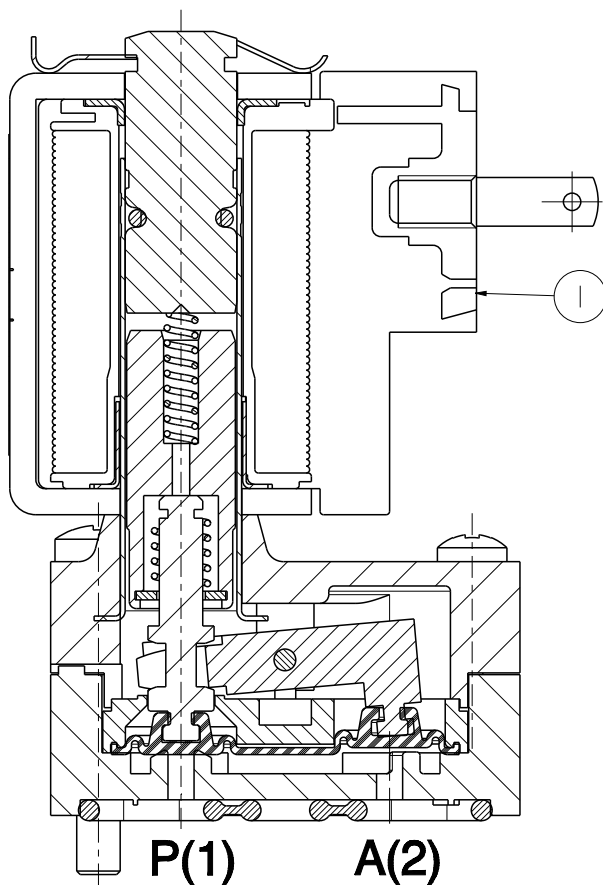
Notes

- Sealings: EPDM = Ethylene-propylene elastomer
- 1 - Suitable for vacuum at any port up to 530mmHg (0,7 bar)

SERIES
D151-D04

ASCO™ MICRO SOLENOID VALVE - DRY
2/2 NORMALLY CLOSED - DIRECT ACTING - TOTAL ISOLATION - SUB-BASE

Spare Parts



MACHINING OF PLATE

Kit description	Kit P.N.	Consisting of:
Coil	ZE30A	Coil pos. 1

Installation

- Solenoid valve can be mounted in any position.
- Valves delivered with sealing O-rings.
- M2,5 screws for sub-base mountings have to be tightened at torque between 0,8 and 1,2 Nm.

THE VALIDITY OF REPORTED DATA IS REFERRED TO THE DATE OF ISSUE. POSSIBLE UPDATES ARE AVAILABLE ON REQUEST