

**DESCRIPTION**

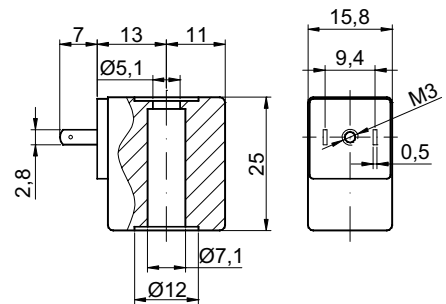
Encapsulated coil incorporating magnetic circuit.  
 Fixing by means of a central nut.  
 Electrical connection according to AMP 2.8x0.5 .



**CONSTRUCTION**

Encapsulation:  
 Class F                      Fibre-glass Nylon

Magnetic circuit:        Zinc-plated steel  
 Windings:                Copper covered with  
                                  class H insulation



**OPTIONS :** Electrical connection through cable  
 Special coil powers  
 Special coil voltages  
 Self-extinguish

CODE Insulation Class F	Direct Current Voltage Volt	Power ① Direct Current Watt	Voltage tolerance	Connector	Service ED
60014	12	4	±5%	10348040	100%
60048	12	8			25%
60114	24	4			100%
60148	24	8			25%
60012	12	2			100%
60112	24	2			100%

① Considering nominal voltage and an ambient temperature of 20°C