

**DESCRIPTION**

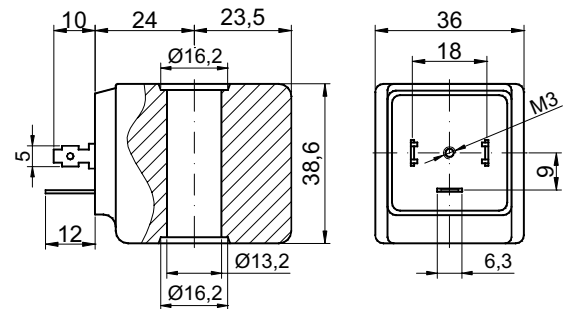
Encapsulated coil incorporating the magnetic circuit.  
 Fixing by means of a central nut.  
 Electrical connection according to DIN 43650 A.



**CONSTRUCTION**

Encapsulation:  
 Class H                      Fibre-glass Polyarylamide

Magnetic circuit:        Zinc-plated steel  
 Windings:                Copper covered with  
                                   class H insulation



**OPTIONS :** Electrical connection through cable  
 Special coil powers  
 Special coil voltages  
 Self-extinguish

| CODE<br>Insulation<br>class<br>H | Alternating Current<br>Frequency 50/60Hz<br>Voltage<br>Volt | Direct<br>Current<br>Voltage<br>Volt | Power ①                      |                           | Voltage<br>tolerance   |                   | Connector                        | Service<br>ED |
|----------------------------------|---|--------------------------------------|------------------------------|---------------------------|------------------------|-------------------|----------------------------------|---------------|
|                                  |   |                                      | Alternating<br>Current<br>VA | Direct<br>Current<br>Watt | Alternating<br>Current | Direct<br>Current |                                  |               |
| 52A                              | 12  | ---                                  | 30                           | 27                        | +15%                   | ±10%              | 10349000<br>10349001<br>10349060 | 100%          |
| 52B                              | 24  | ---                                  |                              |                           |                        |                   |                                  |               |
| 52C                              | 48  | ---                                  |                              |                           |                        |                   |                                  |               |
| 52D                              | 110   | ---                                  |                              |                           |                        |                   |                                  |               |
| 52E                              | 220/230   | ---                                  |                              |                           |                        |                   |                                  |               |
| 52F                              | 240   | ---                                  |                              |                           |                        |                   |                                  |               |
| 52G                              | 380   | ---                                  |                              |                           |                        |                   |                                  |               |
| 520                              | ---   | 12                                   |                              |                           |                        |                   |                                  |               |
| 521                              | ---   | 24                                   |                              |                           |                        |                   |                                  |               |
| 522                              | ---   | 48                                   |                              |                           |                        |                   |                                  |               |

① Considering nominal voltage and an ambient temperature of 20°C