

DESCRIPTION

Solenoid valve 2 way normally closed
 with assisted-lift diaphragm in stainless steel AISI 316.
 With explosion proof coil certified for hazardous area:
ATEX II 2GDEx d IIC T6 or T5 or T4 Gb
Ex tb IIC T80°C or T95°C or T130°C Db IP66
Tamb -40°C ÷ +35°C(T6) or +50°C(T5) or +60°C(T4)
CESI 03 ATEX 344 Extension No. 01/12
 (other certifications e.g.EAC, INMETRO, CCOE etc. on request)



VALVE CONSTRUCTION

Body AISI 316
 Seal material FPM

EXPLOSION PROOF COIL CONSTRUCTION

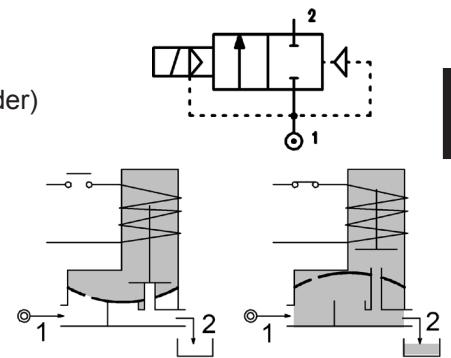
Housing Red colour alloy (painted with epoxy powder)
 Electrical connection 1/2" NPT (M20x1.5 on request)

ON REQUEST

Coil with stainless steel AISI 316 housing (coil series X6)

FEATURES

Minimum differential pressure 0bar
 Maximum allowable pressure PS 16bar
 Maximum fluid viscosity 25cSt (mm²/s)
 Ambient temperature: -40°C ÷ +35°C(T6), +50°C(T5), +60°C(T4)
 Mounting position with vertical coil above



4

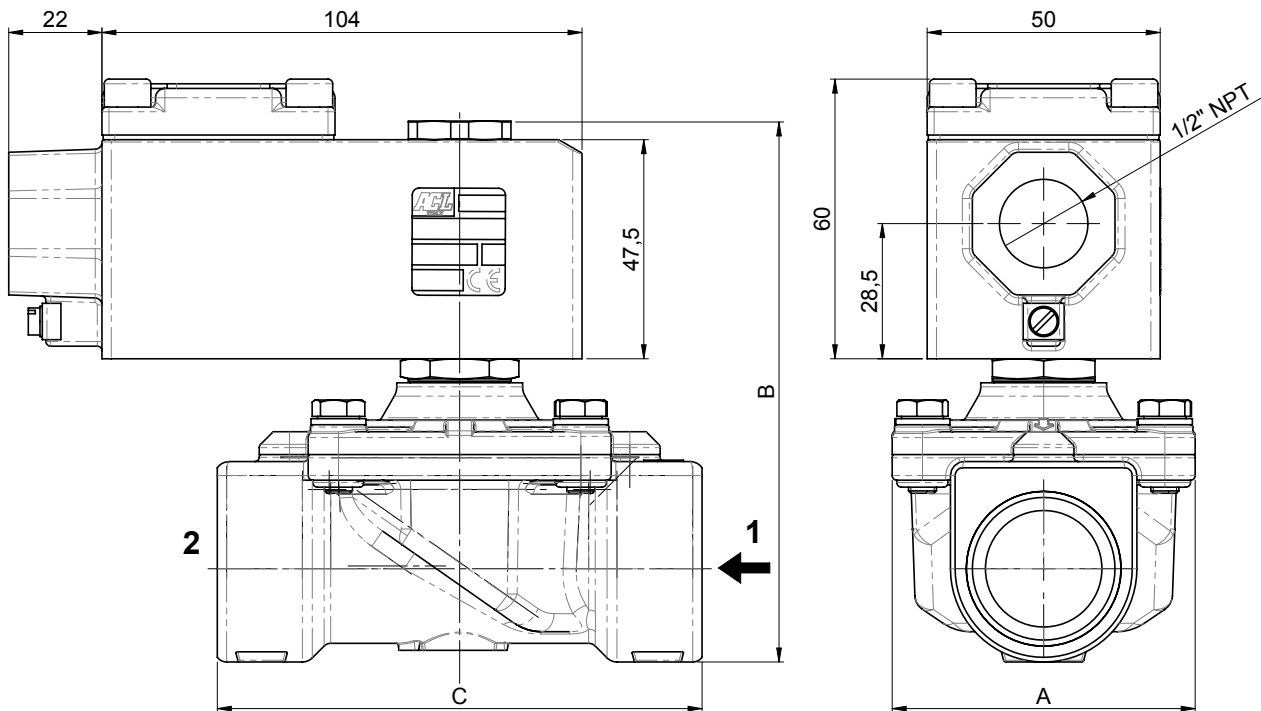
CODE ①	Connection G ISO 228	Orifice mm Ø	Kv m³/h	Differential pressure bar		Nominal power	Coil		Seal	Temp. range °C
				Min	Max AC-DC		Series	Width		
A178CV15///...	3/8"	15	2.4	0	6	8W	A6	50	FPM=V	-10 +80
A178DV16///...	1/2"	16	3	0	6					
A178EV20///...	3/4"	20	3.6	0	6					
A178FV25///...	1"	25	8.4	0	3					

① Coil

COILS ①	Alternating Current 50/60Hz (V)				Direct Current (V)			Electrical connection
	24	48	110	220 230	12	24	48	
Series A6	A6B	A6C	A6D	A6E	A60	A61	A62	1/2" NPT

DESCRIPTION
 Voltage tolerance
 AC +15% -10%
 DC ± 10%
 Protection class IP66
 Continuous service ED100%

OVERALL DIMENSION



CONNECTION	A	B	C
G3/8"	52	98	68
G1/2"	52	98	68
G3/4"	58	106	75
G1"	65	115	90