

DESCRIPTION

Solenoid valve 2 way normally closed with assisted-lift diaphragm.

With explosion proof coil certified for hazardous area:

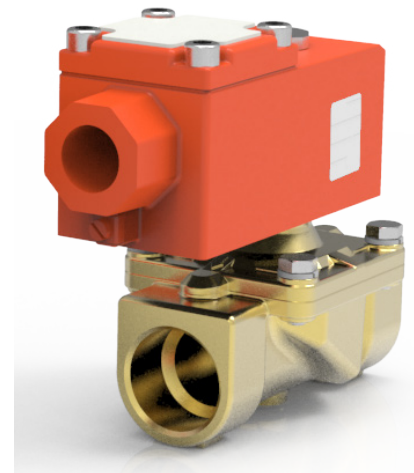
ATEX II 2GDEx d IIC T6 or T5 or T4 Gb

Ex tb IIC T80°C or T95°C or T130°C Db IP66

Tamb -40°C ÷ +35°C(T6) or +50°C(T5) or +60°C(T4)

CESI 03 ATEX 344 Extension No. 01/12

(other certifications e.g.EAC, INMETRO, CCOE etc. on request)



VALVE CONSTRUCTION

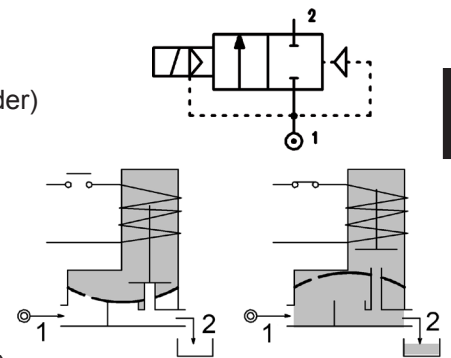
Body Brass
Seal material FPM

EXPLOSION PROOF COIL CONSTRUCTION

Housing Red colour alloy (painted with epoxy powder)
Electrical connection 1/2" NPT (M20x1.5 on request)

FEATURES

Minimum differential pressure 0bar
Maximum allowable pressure PS 16bar
Maximum fluid viscosity 25cSt (mm²/s)
Ambient temperature: -40°C ÷ +35°C(T6), +50°C(T5), +60°C(T4)
Mounting position with vertical coil above



4

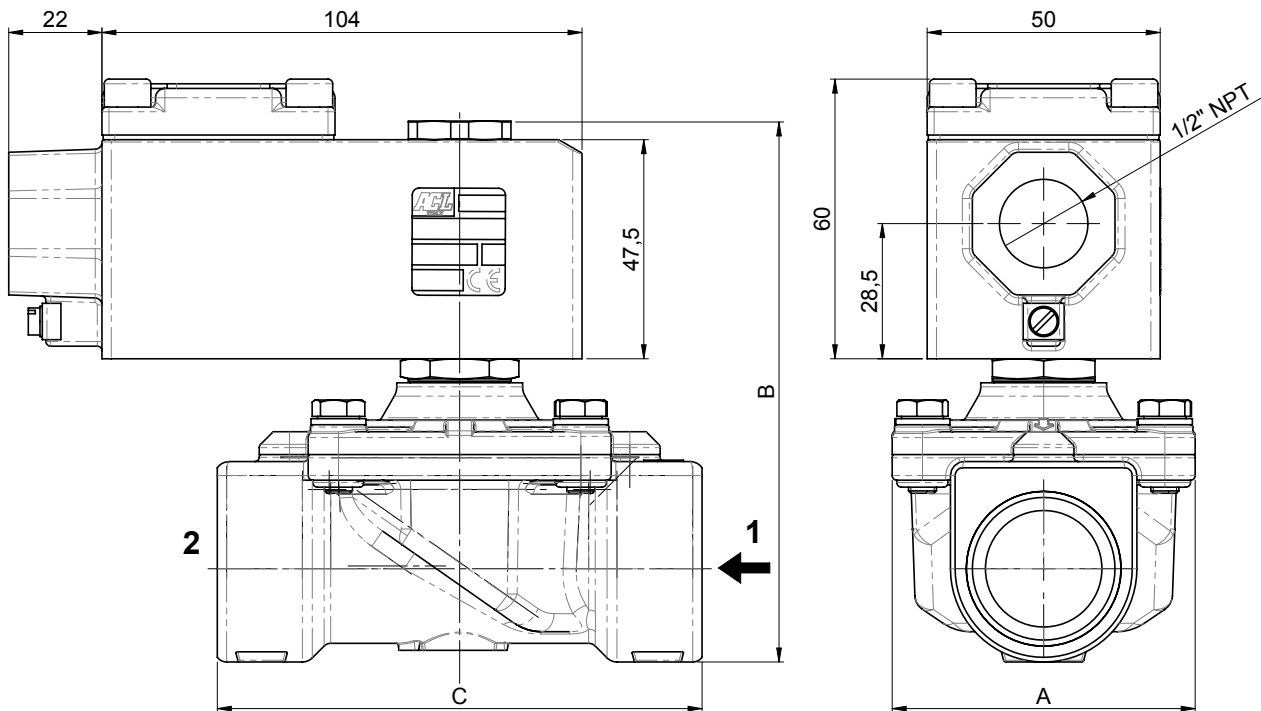
| CODE ① | Connection G ISO 228 | Orifice mm Ø | Kv m ³ /h | Differential pressure bar | | Nominal power | Coil | | Seal | Temp. range °C |
|----------------|----------------------------|--------------------|-------------------------|------------------------------|--------------|------------------|--------|-------|-------|----------------------|
| | | | | Min | Max AC-DC | | Series | Width | | |
| A168CV11///... | 3/8" | 11 | 1.2 | 0 | 5 | 8W | A6 | 50 | FPM=V | -10 +80 |
| A168DV16///... | 1/2" | 16 | 2.4 | 0 | 5 | | | | | |
| A168EV16///... | 3/4" | 16 | 2.4 | 0 | 5 | | | | | |
| A168EV20/H/... | 3/4" | 20 | 7.2 | 0 | 5 | | | | | |
| A168FV25/H/... | 1" | 25 | 8.4 | 0 | 5 | | | | | |

① Coil

| COILS ① | Alternating Current 50/60Hz (V) | | | | Direct Current (V) | | | Electrical connection |
|------------|------------------------------------|-----|-----|------------|-----------------------|-----|-----|--------------------------|
| | 24 | 48 | 110 | 220 230 | 12 | 24 | 48 | |
| Series A6 | A6B | A6C | A6D | A6E | A60 | A61 | A62 | 1/2" NPT |

DESCRIPTION
 Voltage tolerance
 AC +15% -10%
 DC ± 10%
 Protection class IP66
 Continuous service ED100%

OVERALL DIMENSION



| CONNECTION | A | B | C |
|------------|----|-----|-----|
| G3/8" | 50 | 95 | 56 |
| G1/2" | 50 | 106 | 70 |
| G3/4" | 50 | 106 | 70 |
| G3/4" /H | 65 | 109 | 104 |
| G1" /H | 65 | 116 | 104 |